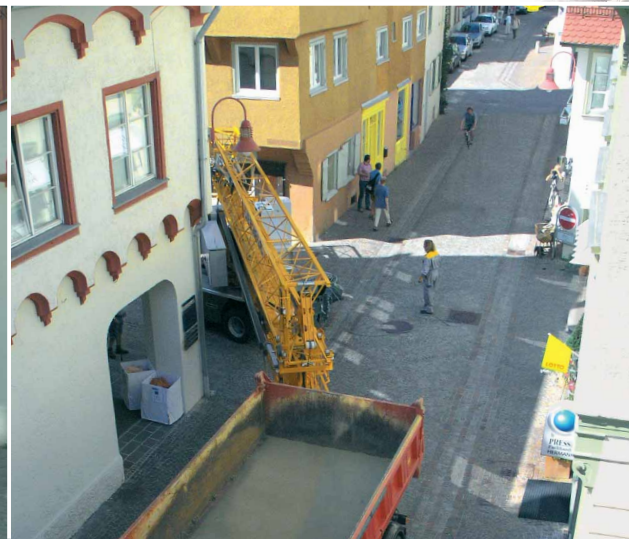


# The new 22 HM mobile fast-erecting crane.

- Hydraulic one-person erection
- Space-saving aerial jib mounting
- 40° raised jib position, continuously variable
- 160° jib position for obstruction avoidance
- Continuously variable drive assemblies
- Transport with complete ballast up to 80 km/h
- Steerable undercarriage with ABS and self-steering axle
- Pneumatic lifting and lowering system



# LIEBHERR





## 22 HM - Technical data:

Working radius:	25.0 / 27.0 m
Load capacity at jib end:	800 / 700 kg
Max. load capacity:	2,000 kg
Hook height:	19.0 m
20° steep-angle hook height:	26.2 m
40° steep-angle hook height:	33.4 m
Transport length:	13.95 m
Transport width:	2.5 m
Transport height:	3.6 m (3.1 m)
Slewing radius:	2.4 m