

Powerful and precise.

1000 EC-H High-Top crane

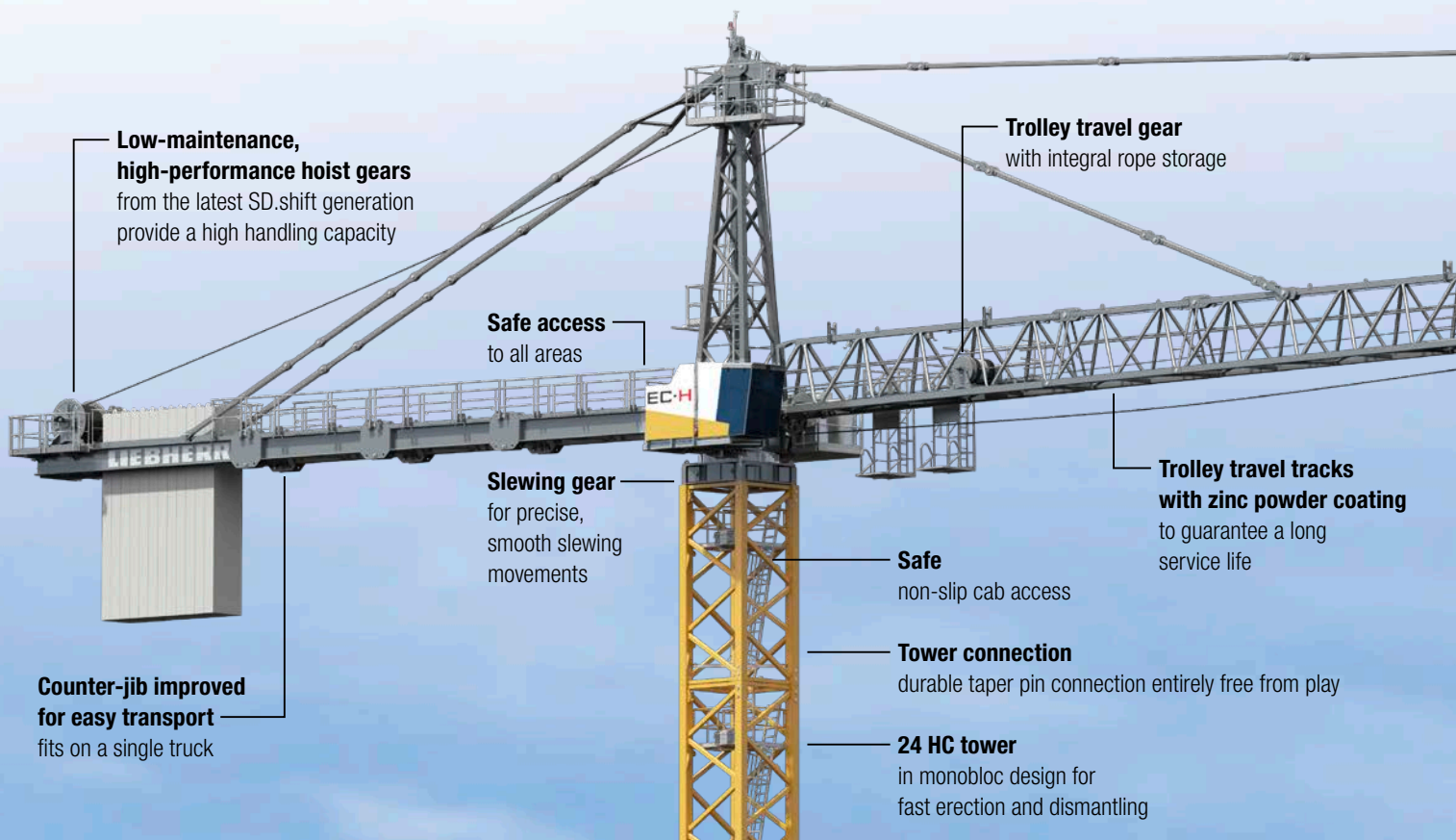


Technical data

Max. lifting capacity	50,000 kg
Max. radius	81.4 m
Max. lifting capacity at the jib head	11,500 kg
Max. free-standing hook height	91.3 m

LIEBHERR

1000 EC-H High-Top crane



Low-maintenance, high-performance hoist gears from the latest SD.shift generation provide a high handling capacity

Trolley travel gear with integral rope storage

Safe access to all areas

Trolley travel tracks with zinc powder coating to guarantee a long service life

Slewing gear for precise, smooth slewing movements

Safe non-slip cab access

Tower connection durable taper pin connection entirely free from play

24 HC tower in monobloc design for fast erection and dismantling

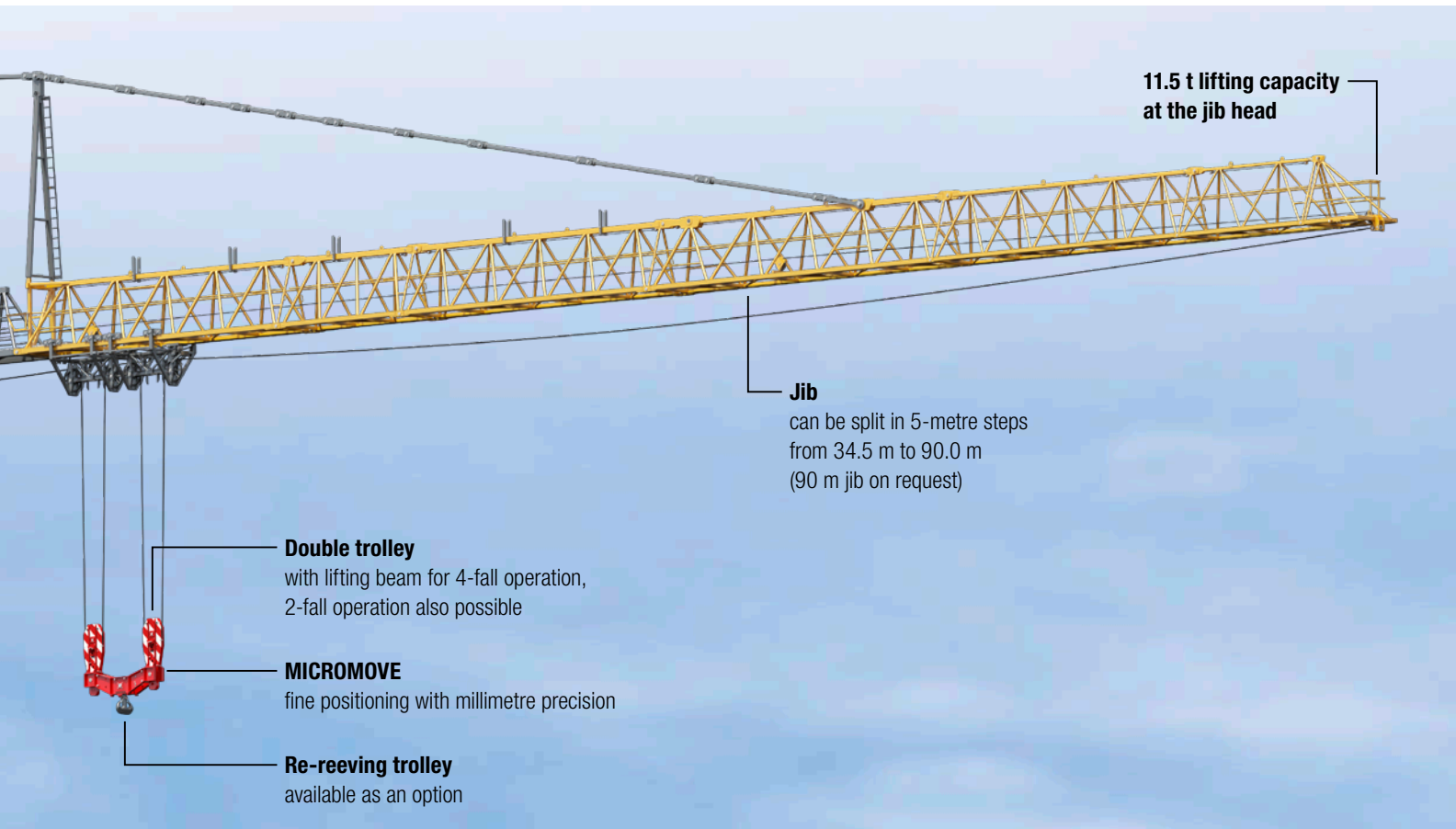
Counter-jib improved for easy transport fits on a single truck

Powerful and precise.

Hoisting prefabricated parts with weights of several tonnes is particularly commonplace in bridge, power station and plant construction.

The 1000 EC-H, depending on the version, with a maximum lifting capacity of 40 t or 50 t, can position even very heavy loads with millimetre precision and achieves free-standing hook heights of up to 91.3 m. The various assistance systems provided by the Litronic control system enable maximum safety and productivity to be achieved. High design and production quality standards ensure that the 1000 EC-H retains its value in the long term.

Like all standard machines from Liebherr, the 1000 EC-H has also been designed for efficient erection and transport using Connect & Work technology.



11.5 t lifting capacity at the jib head

Jib
can be split in 5-metre steps from 34.5 m to 90.0 m (90 m jib on request)

Double trolley
with lifting beam for 4-fall operation, 2-fall operation also possible

MICROMOVE
fine positioning with millimetre precision

Re-reeving trolley
available as an option



24 HC tower system



Large crane on a slimline support

1000 metre-tonnes with an external dimension of 2.4 m – using the slimline 24 HC 1000 or 24 HC 1250 tower system, you can reach hook heights of up to 81.3 m. Compact transport dimensions, durable taper pin connections entirely free from play and excellent retention of value make the 24 HC an extremely cost-effective tower system.

Well thought-out – the 1000 EC-H slewing platform

- Quick connections for easy and fast erection
- High safety level using the latest generation of control systems
- Fast erection – just one hoist for the complete head
- Comfort cabin – ergonomically equipped cabin enables the operator to work without fatigue
- Removable brackets enable the crane to be transported in full in a container



EC-H cranes – renowned for their great strength.

From the very beginning ...

- Low-cost transport:
 - no special transport required
 - containerisable packing units
- Low-cost erection
 - using adjustable assembly units to suit the mobile crane
 - with quick assembly connections using the Connect & Work system

... work safely

- High handling capacity:
 - high-speed, low-maintenance high-performance driving units manufactured in-house
 - can be operated by remote control
 - ergonomic workstation for the crane operator
- Litronic – safety-based control system with modern assistance systems
 - ABB operating-range limiting system
 - anti-collision system (AKS interface)
 - oscillation-damping system and wind force moment control for jib stabilisation during load transport
 - lifting capacity increase of up to 20 % with Load-Plus
 - adjustable slewing gear modes for free adjustment of slewing properties
 - Micromove fine positioning system