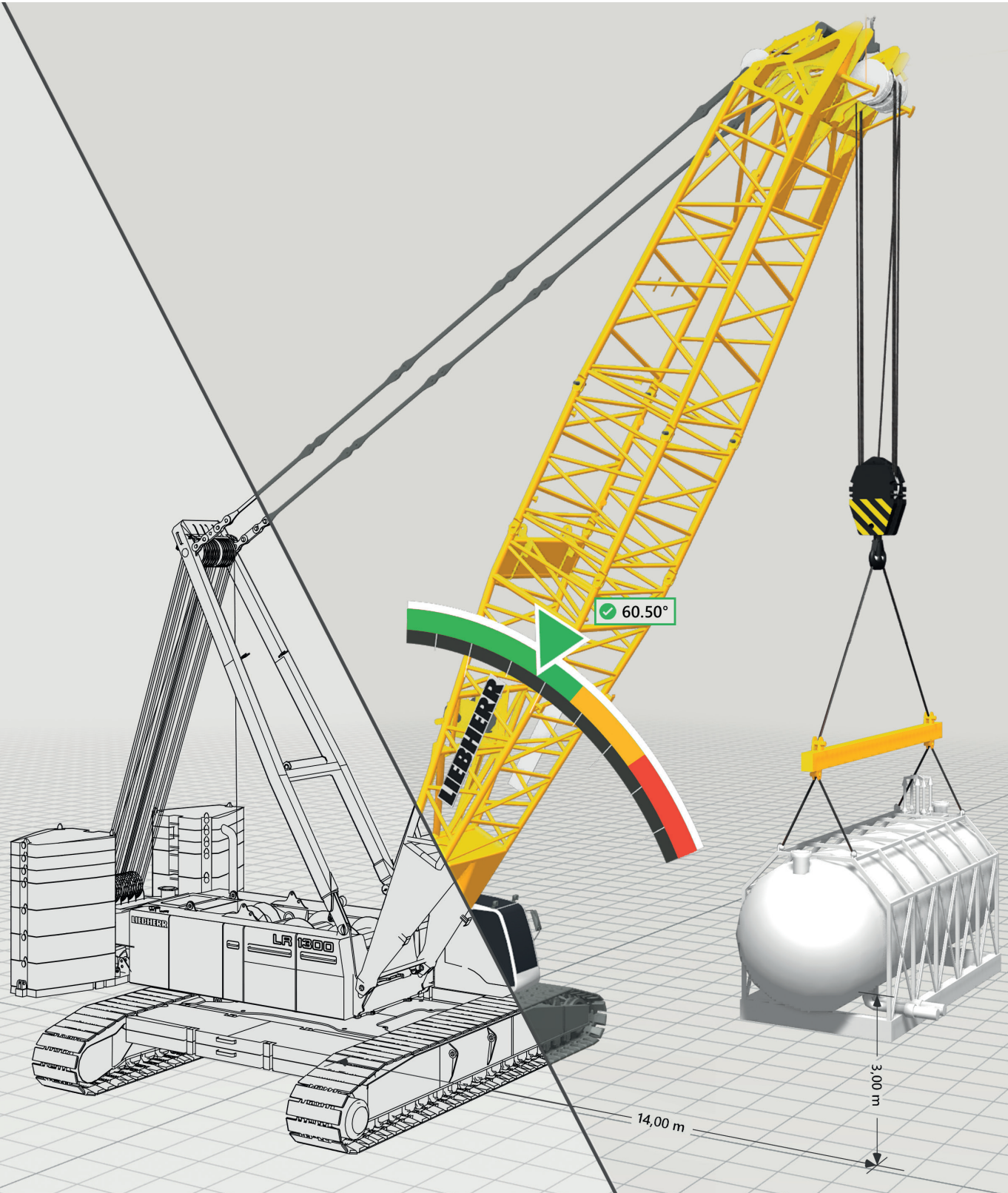




Crane Planner 2.0

plan your work, work your plan

EN



LIEBHERR

User interface

Tool bar

Essential tools required during the entire project.

Menu bar

Administration of projects, insertion of objects and machines, import and export of planning data.

Objects & Machines

List of all objects (e.g. lifting gear) and machines involved.

Parameters

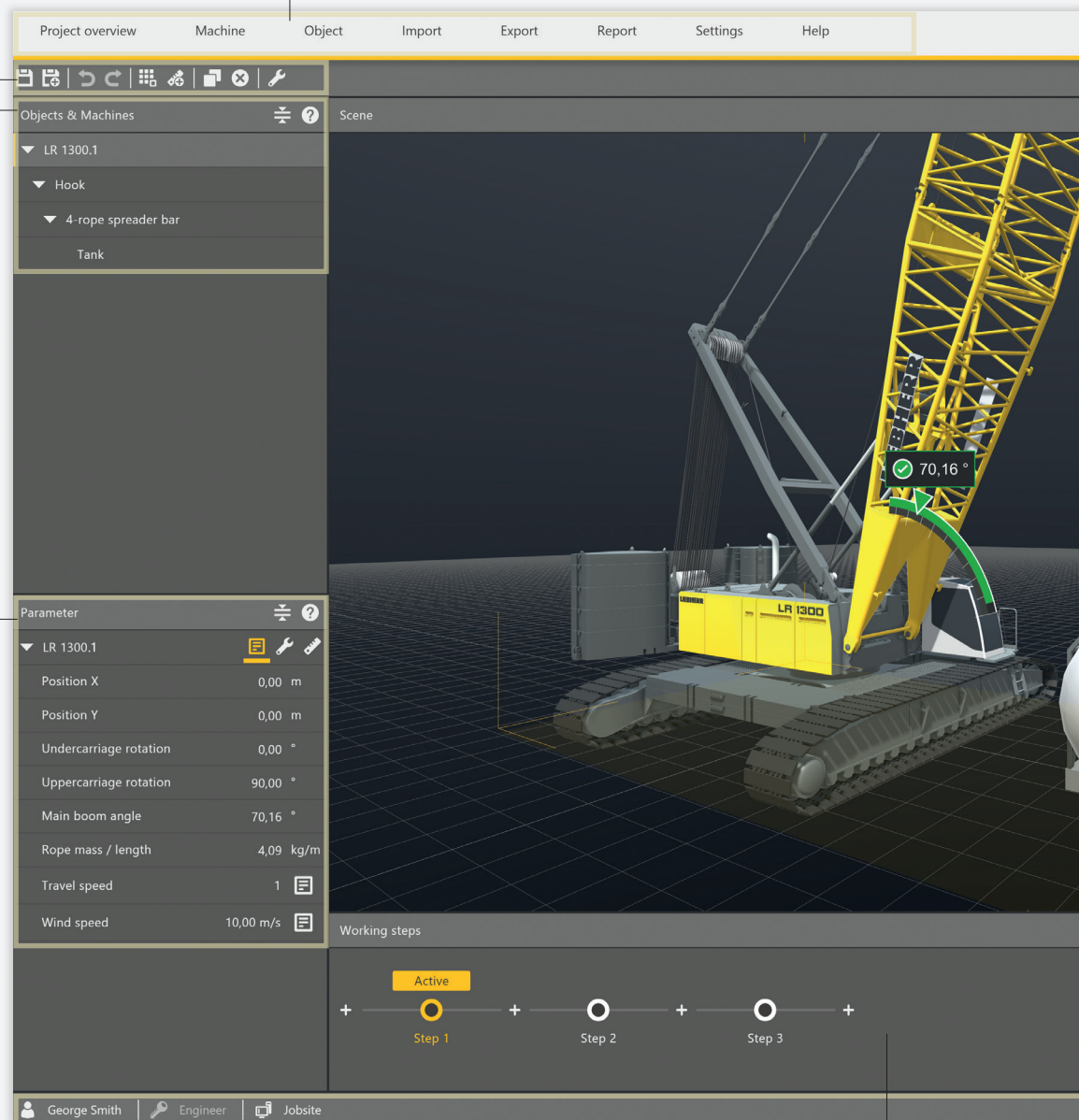
All properties of the selected object are listed. Any changes in these parameters have a direct impact on the scene.

Status bar

Information about the version, user licence and quality of the connection are provided.

Working steps

Progress of lift process is displayed. Each step can be saved, edited or reopened.



Crane Planner 2.0

Scene

Planning is visualized in 2D/3D from different perspectives. Objects and machines can be modified and moved.

Machine information

Planning data (based on the crane's LML), such as utilization, geometry, lifting capacity and ground pressure are displayed here.

The screenshot displays the Crane Planner 2.0 interface. On the left, a 3D view shows a crane lifting a large white cylindrical object. The right sidebar is titled 'Machine information' and shows details for 'LR 1300.1'. The boom utilization is 25.4%, and the total load is 15.18 t. Below this, a 'Ground pressure' diagram shows a circular footprint with pressure values (27.04 t/m² and 10.14 t/m²) and angles (332°, 28°, 208°, 152°, 90.00°). The diagram also shows dimensions: 6.80 m width, 7.10 m height, and 1.04 m radius. At the bottom, there are sections for 'Snapshots' and 'History', and a status bar with 'Service quality good', 'Active jobs: 0', and 'Event log'.

Visualized details

The most important values for the ground pressure, centre of gravity and the erectability can be displayed in more detail in a separate graphic.

Snapshots

List of snapshots that can be combined with planning data in the Report Designer.

Active jobs / Event log

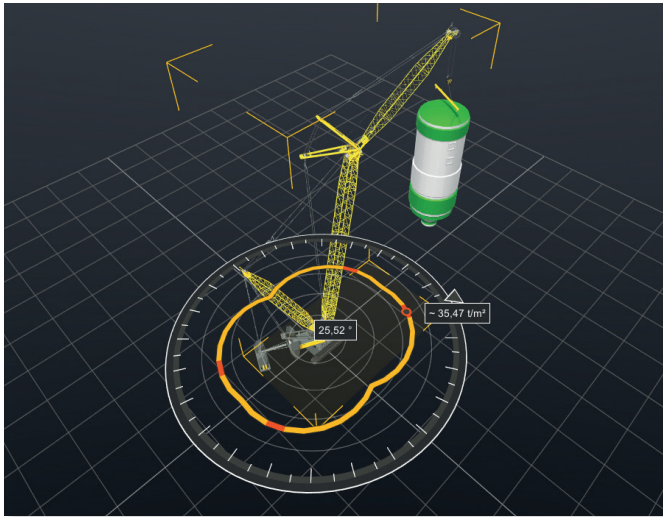
'Active jobs' indicates any jobs running in the background while the 'Event log' lists all actions relevant to the system.

History

Last actions are indicated and can also be reversed.

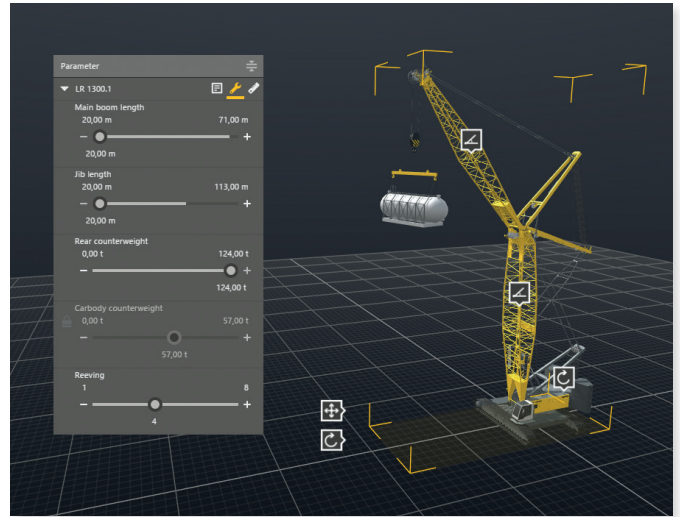
Crane Planner 2.0

Easier planning through visualisation



Ground pressure

When the machine is swung in the scene, areas affected by the highest ground pressure are clearly highlighted. Therefore, the planner can plan in advance and proactively avoid such areas.



Quick configuration

By means of the quick configuration a planner can quickly reconfigure various components of the crane during the planning process (e.g. length of the main boom) and have the system recalculate the entire lift.

Intelligent solutions for demanding lifts

Combination of highly detailed, interactive 3D models with all relevant planning data.

Ideal tool for planners and engineers who require not only actual data, but also precise 3D models of the machine configuration being used.

Every change in influencing factors (crane geometry, load, surroundings) activates a new calculation of all planning data.

Easy definition of both typical and user-specific dimensions.

Service program for everyone, no CAD knowledge necessary.



For further information click here
www.liebherr.com/CranePlanner.

There you will find:

- tutorials
- the latest product portfolio
- a detailed feature map
- all available licence versions
- the registration instructions for a **free demo version**
- a simple installation process incl. hardware requirements
- a list of the available training courses

Liebherr-Werk Nenzing GmbH

Dr. Hans Liebherr Str. 1, 6710 Nenzing/Austria
Tel.: +43 50809 41 -473, Fax: +43 50809 42 500
www.liebherr.com/CranePlanner, E-Mail: lwn-ts-DISC@liebherr.com
facebook.com/LiebherrConstruction